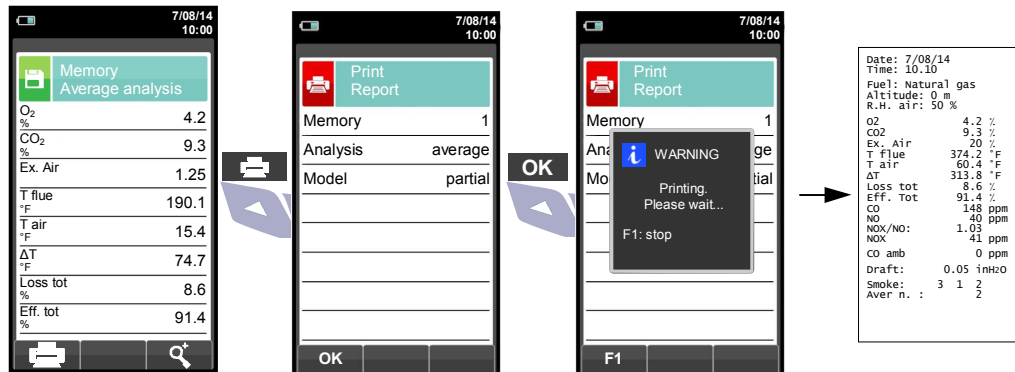


6 COMBUSTION ANALYSIS & SAVING

WARNING! - Before proceeding with the combustion analysis remember to set the proper fuel.



In case the automatic print mode is set then the average analysis printing start automatically. Conversely, after the sampling of the third analysis, the average analysis is shown, so that it can be sent to the printer as explained in the following.



- To view different test measurements, use 'Find' key to scroll through the various test measurement screens.
- Xair** = Excess Air **Tg** = Flue Gas Stack Temperature **Ta** = Ambient or Incoming Air Temperature
- ΔT** = Differential Temperature (NET Temperature) **Eff. tot** = Total Combustion Efficiency **Loss tot** = Stack Losses

E4500 QUICK GUIDE CE



Compliant with: EN 50379-1, EN 50379-2

Features

- Combustion, Flue gas & Emissions analysis
- Calculating of stack heat loss and efficiency
- CO environment measurement
- Measuring differential pressure
- Draft measurement
- Pressure measurement in the gas supply pipe
- Store Smoke values, calculating mean value



The magnets in the back of the instrument can damage credit cards, hard drives, mechanical watches, pacemakers, defibrillators and other devices proven sensitive to magnetic fields. It is recommended to keep the instrument at a distance of at least 10" away from any of these devices.

KEYBOARD FUNCTIONS

KEYS	FUNCTION
[Left Arrow]	Activate the context keys shown on the display
[Save Icon]	Enters the Memory menu
[Print Icon]	Enters the Print menu
[Gear Icon]	Enters the Configuration menu
[Flame Icon]	Previes the combustion analysis
[Circular Arrow Icon]	Enters the measurements menu
[Power Icon]	Turns the instrument on/off
[ESC]	Quits the current screen
[Directional Pad]	Selects and/or modifies
[OK]	Confirms data

CONTEXT KEYS

CONTEXT KEY	FUNCTION
[Zero Icon]	ZERO the pressure sensor
[Refresh Icon]	Updates the measure
[Memory Icon]	Saves the current measurement or analysis in the memory location selected from the 'Select Memory' menu
[Print Icon]	Starts the report ticket
[Save Icon]	Enters the Print menu
[Power Icon]	Stops the flue gas analysis
[Pencil Icon]	Enters the modify mode for the selected parameter
[OK]	Confirms the settings
[ESC]	Cancels the change/operation and returns to the previous screen
[Find Icon]	Zooms the screen
[Find Icon]	Shows the details for the selected parameter
[Find Icon]	'Find' function; starts a quick search for the analysis to recall

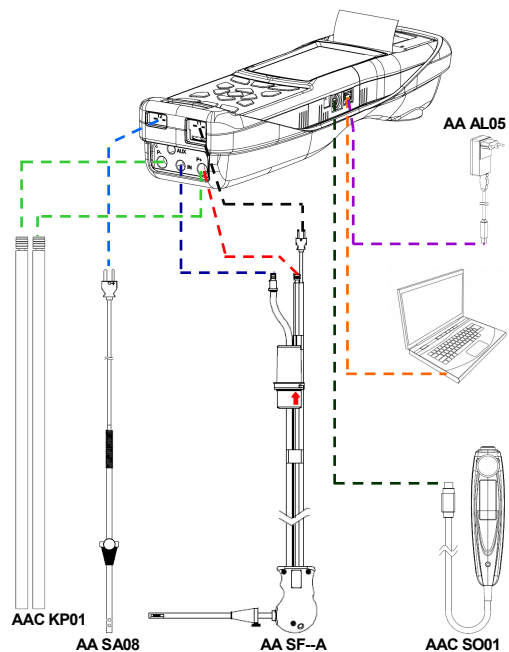


E Instruments respects the nature and the environment, therefore provides this quick user guide to avoid any unwanted waste of paper. However the complete manual for use and maintenance of the instrument is already available in the USB stick (included). Respect your environment: think before printing the full manual on paper.



402 Middletown Blvd, Suite 216, Langhorne, PA 19047 USA
Tel: (215) 750-1212; Fax: (215) 750-1399
info@E-Inst.com - www.E-Inst.com

1 USING THE FLUE GAS ANALYSER



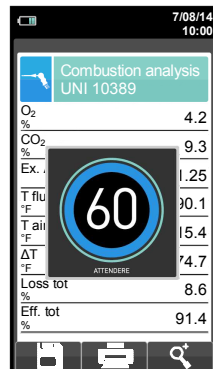
- WARNING!**
- Be sure all connections are tight to assure accurate sampling.
 - It is important that water trap & filter be installed vertically to prevent damage from moisture & particles to sensors.
 - When conducting measurements, the water trap/filter assembly **MUST** be in a VERTICAL position.
 - When testing is completed, always drain the water trap with any condensation (after EVERY test!).

2 ON / OFF

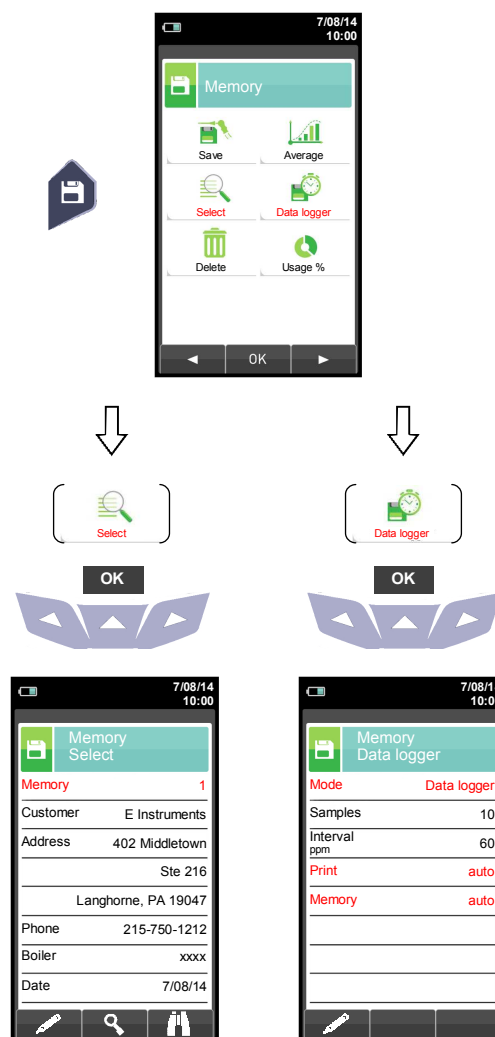
Insert the gas probe in the chimney. The gas autozero will be automatically performed thanks to the internal diverting electrovalve.



KEEP
PRESSED
FOR 2
SECONDS
UNTIL IT
BEEPS



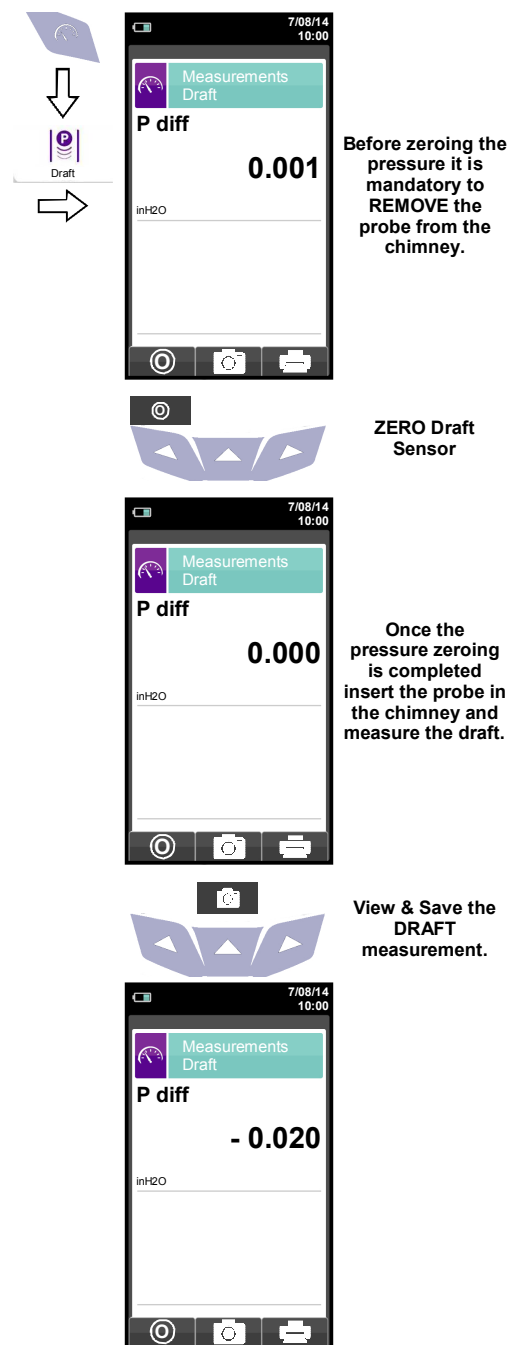
3 MEMORY



In "Select" can be inserted all the customer data.

In "Data logger", the user can define the analysis, memory selection and printing modes.

4 MEASURE OF THE DRAFT



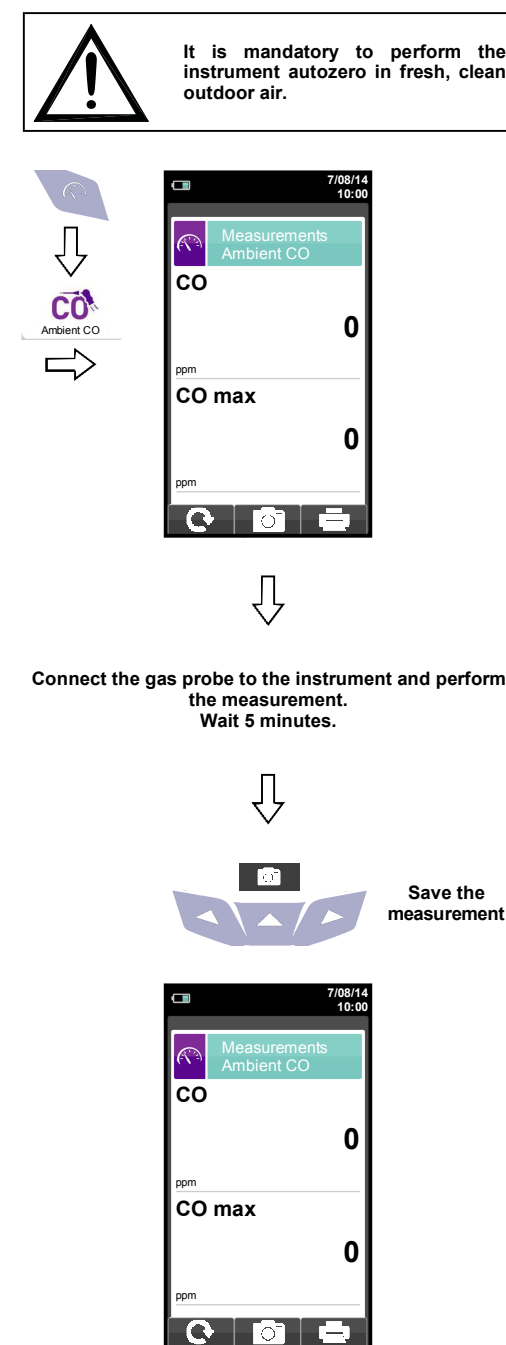
Before zeroing the pressure it is mandatory to REMOVE the probe from the chimney.

ZERO Draft Sensor

Once the pressure zeroing is completed insert the probe in the chimney and measure the draft.

View & Save the DRAFT measurement.

5 MEASURE AMBIENT CO



Connect the gas probe to the instrument and perform the measurement. Wait 5 minutes.

Save the measurement